

AECOM

PROJECT
BALLIEMEANOCH
PUMPED STORAGE
HYDRO

CLIENT
ILI (Borders PSH) Ltd.

CONSULTANT
AECOM Limited
177 Bothwell Street
Glasgow G2 7ER
www.aecom.com

LEGEND

- Development Site
- Development Boundary
- Above Ground Infrastructure
- Below Ground Infrastructure
- 200m Buffer on Above Ground Infrastructure
- Survey Area
- Surveyed in 2019 only

Otter Survey Results

- Holt
- Lay-up
- Spraint
- Anal Jelly
- Feeding Remains

NOTES

Note that otter evidence identified outside the 200 m buffer on above ground infrastructure (outside the zone of possible impacts on holts / lay-ups) are shown unlabeled and faded

Reproduced from Ordnance Survey digital map data © Crown copyright 2024. All rights reserved. Licence number 0100031673.

© 2024 Microsoft Corporation © 2024 Maxar ©CNES (2024) Distribution Airbus DS

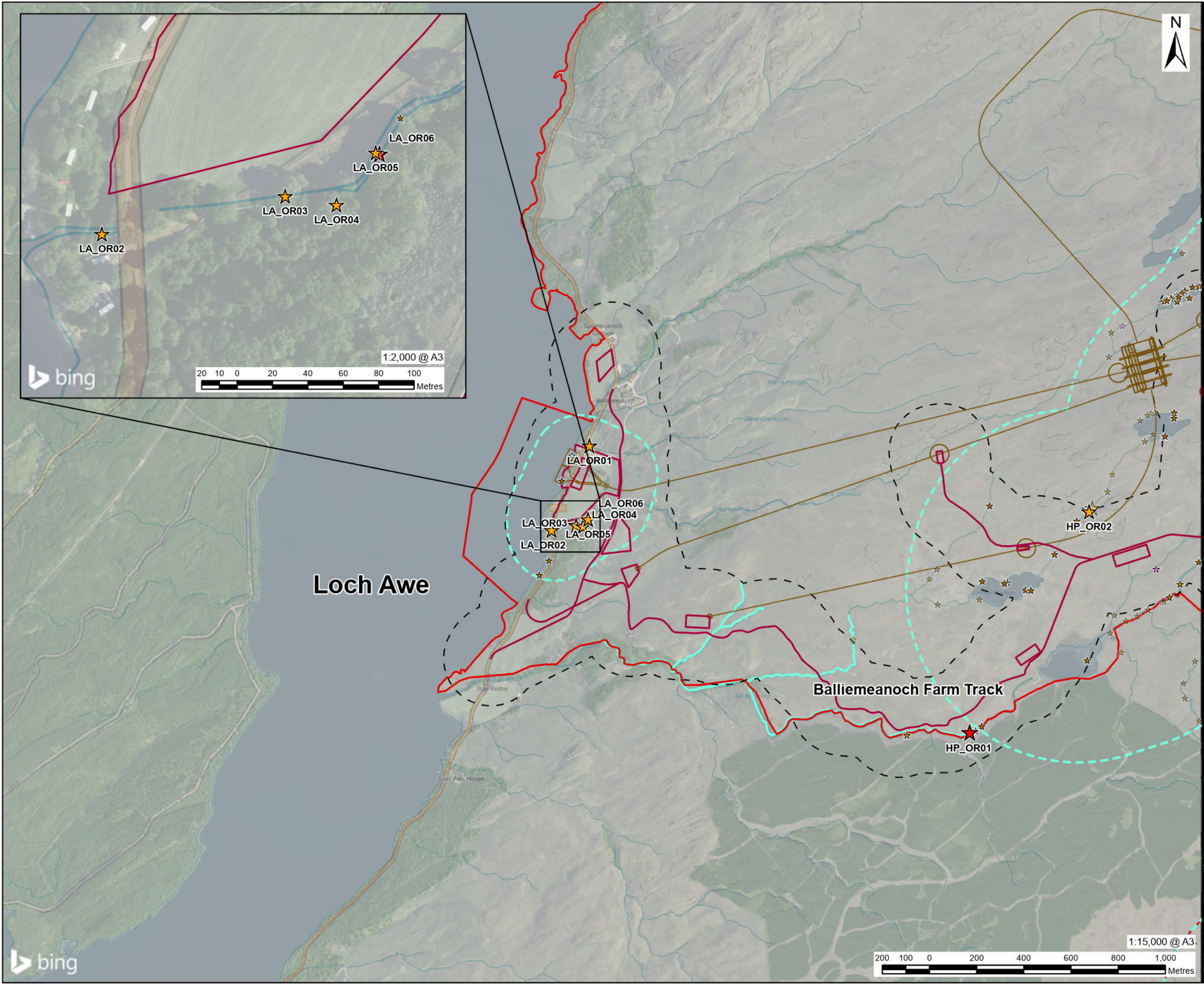
ISSUE PURPOSE
FINAL

PROJECT NUMBER
60570241

FIGURE TITLE
Otter Survey Results and Incidental Records

FIGURE NUMBER
Figure 6.8 (Sheet 1 of 6)

This drawing has been prepared for the use of AECOM's client. It may not be used, modified, reproduced or relied upon by third parties, except as agreed by AECOM or as required by law. AECOM accepts no responsibility, and denies any liability whatsoever, to any party that uses or relies on this drawing without AECOM's express written consent. Do not scale this document. All measurements must be obtained from the stated dimensions.



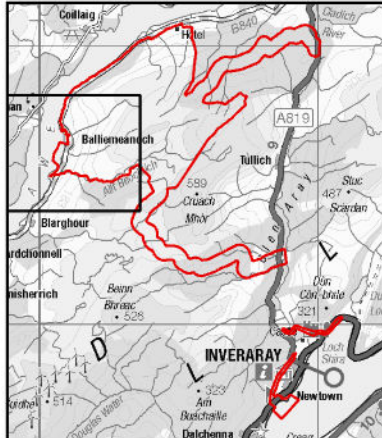
AECOM

PROJECT
BALLIEMEANOCH
PUMPED STORAGE
HYDRO

CLIENT
 ILI (Borders PSH) Ltd.

CONSULTANT
 AECOM Limited
 177 Bothwell Street
 Glasgow G2 7ER
 www.aecom.com

- LEGEND**
- Development Site
 - Development Boundary
 - Above Ground Infrastructure
 - Below Ground Infrastructure
 - 200m Buffer on Above Ground Infrastructure
 - Infrastructure
 - Survey Area
 - Surveyed in 2019 only
 - Other Survey Results
 - Holt
 - Lay-up
 - Sprint
 - Anal Jelly
 - Feeding Remains



NOTES

Note that other evidence identified outside the 200 m buffer on above ground infrastructure (outside the zone of possible impacts on holt / lay-ups) are shown unlabeled and faded

Reproduced from Ordnance Survey digital map data © Crown copyright 2024. All rights reserved. Licence number 0100031673.

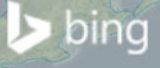
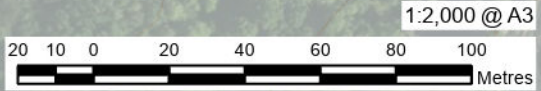
© 2024 Microsoft Corporation © 2024 Maxar ©CNES (2024) Distribution Airbus DS

ISSUE PURPOSE
 FINAL

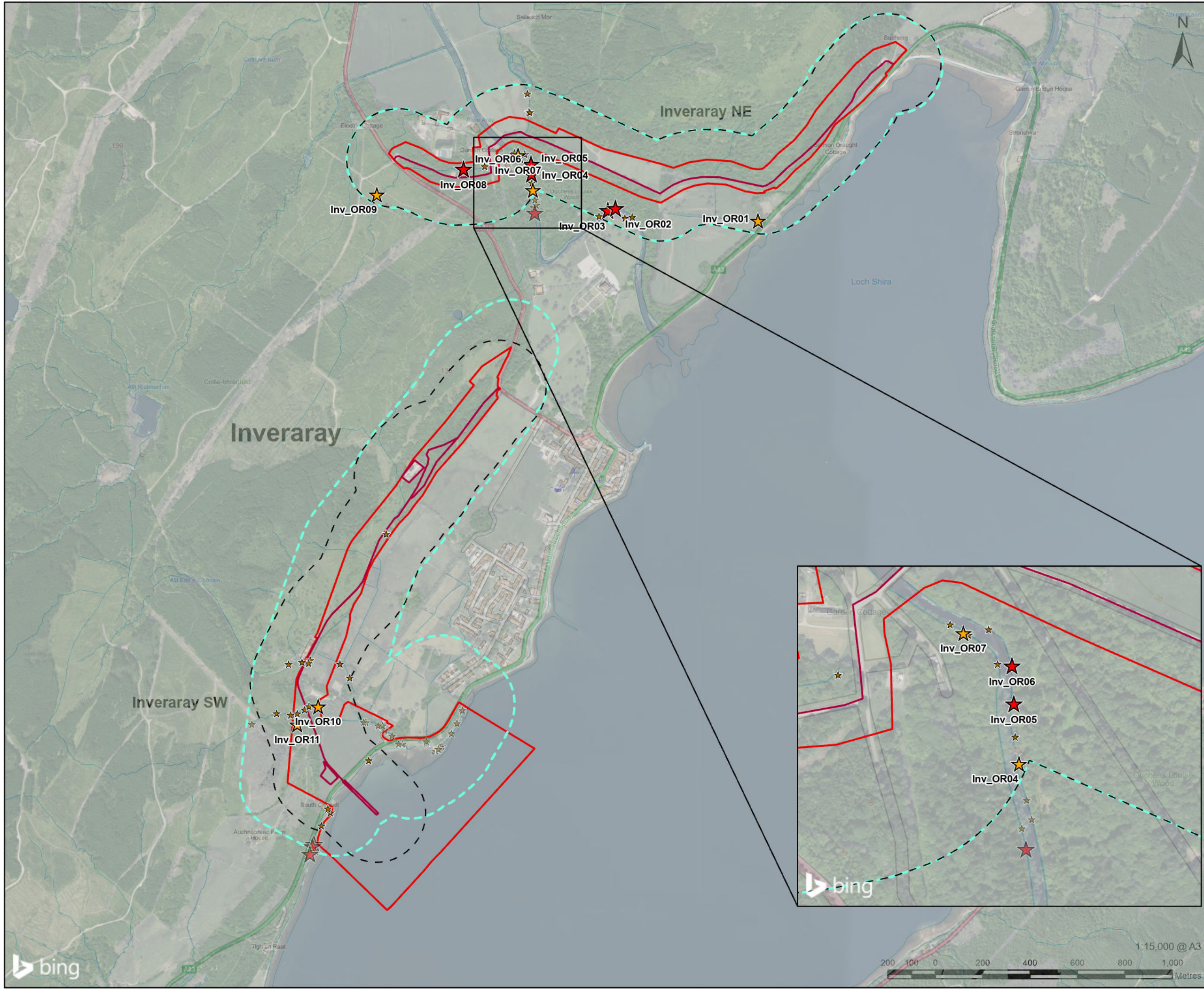
PROJECT NUMBER
 60570241

FIGURE TITLE
 Otter Survey Results and Incidental Records

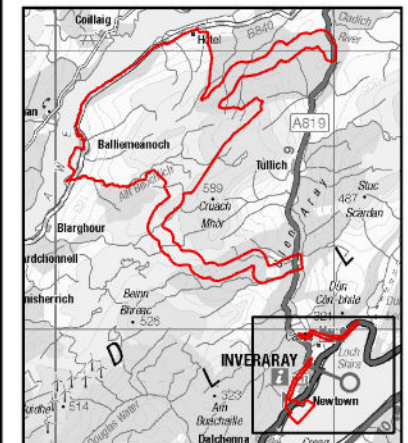
FIGURE NUMBER
 Figure 6.8 (Sheet 2 of 6)



This drawing has been prepared for the use of AECOM's client. It may not be used, modified, reproduced or relied upon by third parties, except as agreed by AECOM or as required by law. AECOM accepts no responsibility, and denies any liability whatsoever, to any party that uses or relies on this drawing without AECOM's express written consent. Do not scale this document. All measurements must be obtained from the stated dimensions.



- LEGEND**
- Development Site
 - Development Boundary
 - Above Ground Infrastructure
 - Below Ground Infrastructure
 - 200m Buffer on Above Ground Infrastructure
 - Survey Area
 - Other Survey Results
 - ★ Holt
 - ★ Lay-up
 - ★ Spraint
 - ★ Anal Jelly
 - ★ Feeding Remains



NOTES

Note that other evidence identified outside the 200 m buffer on above ground infrastructure (outside the zone of possible impacts on holt / lay-ups) are shown unlabeled and faded

Reproduced from Ordnance Survey digital map data © Crown copyright 2024. All rights reserved. Licence number 0100031673.

© 2024 Microsoft Corporation © 2024 Maxar ©CNES (2024) Distribution Airbus DS

ISSUE PURPOSE

FINAL

PROJECT NUMBER

60570241

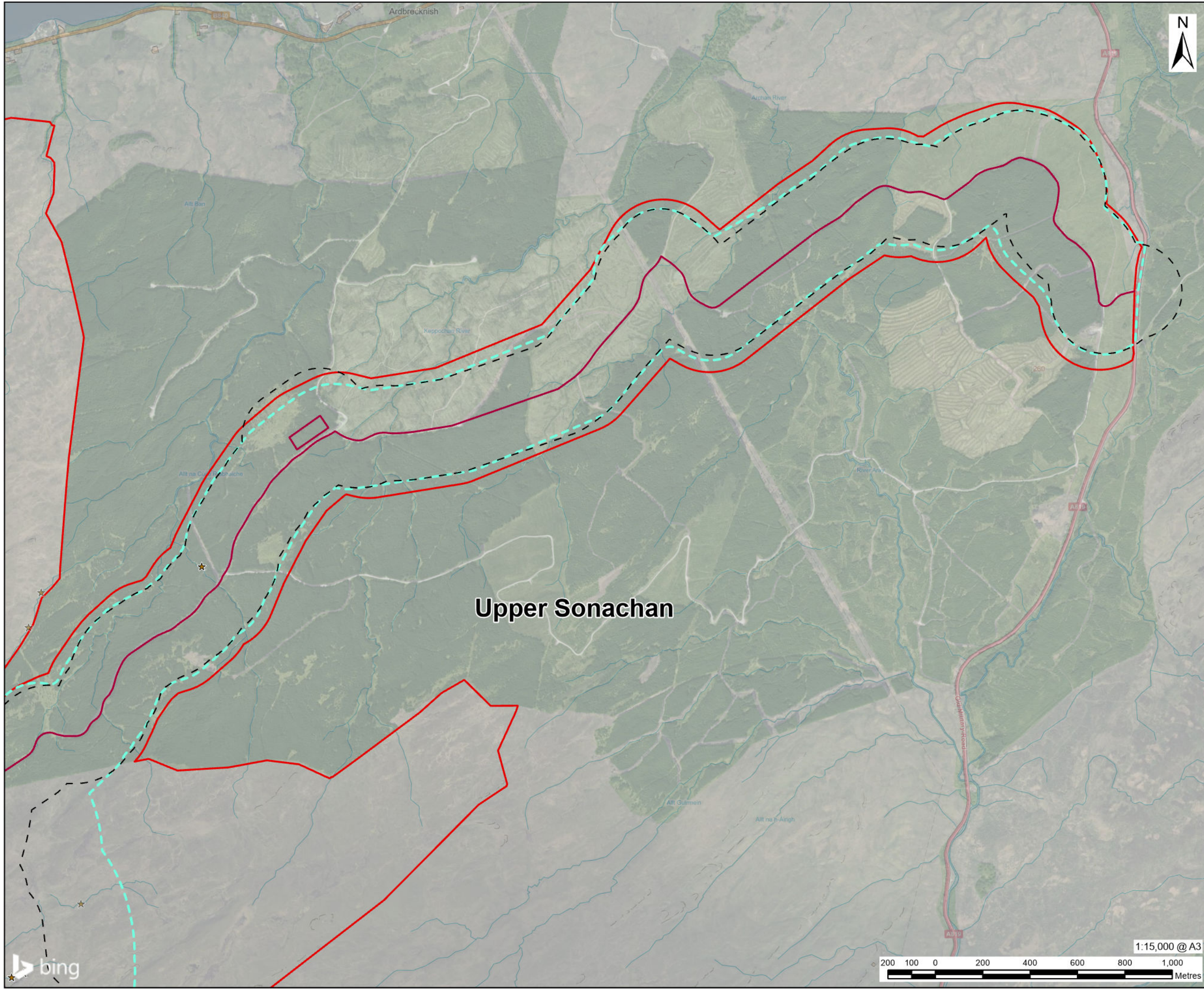
FIGURE TITLE

Other Survey Results and Incidental Records

FIGURE NUMBER

Figure 6.8 (Sheet 3 of 6)

This drawing has been prepared for the use of AECOM's client. It may not be used, modified, reproduced or relied upon by third parties, except as agreed by AECOM or as required by law. AECOM accepts no responsibility, and denies any liability whatsoever, to any party that uses or relies on this drawing without AECOM's express written consent. Do not scale this document. All measurements must be obtained from the stated dimensions.



AECOM

PROJECT

**BALLIEMEANOCH
PUMPED STORAGE
HYDRO**

CLIENT

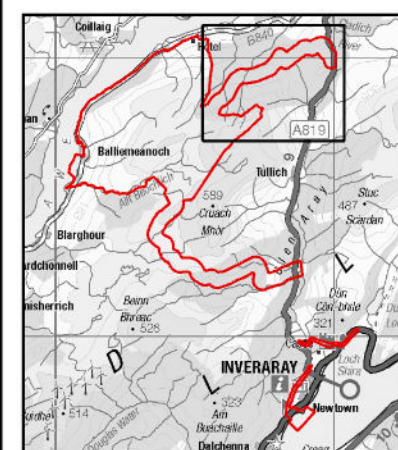
ILI (Borders PSH) Ltd.

CONSULTANT

AECOM Limited
177 Bothwell Street
Glasgow G2 7ER
www.aecom.com

LEGEND

- Development Site**
- Development Boundary
 - Above Ground Infrastructure
 - Below Ground Infrastructure
 - 200m Buffer on Above Ground Infrastructure
 - Survey Area
- Otter Survey Results**
- ★ Holt
 - ★ Lay-up
 - ★ Spraint
 - ★ Anal Jelly
 - ★ Feeding Remains



Upper Sonachan

NOTES

Note that otter evidence identified outside the 200 m buffer on above ground infrastructure (outside the zone of possible impacts on holt / lay-ups) are shown unlabeled and faded

Reproduced from Ordnance Survey digital map data © Crown copyright 2024. All rights reserved. Licence number 0100031673.

© 2024 Microsoft Corporation © 2024 Maxar ©CNES (2024) Distribution Airbus DS

ISSUE PURPOSE

FINAL

PROJECT NUMBER

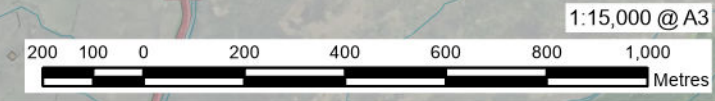
60570241

FIGURE TITLE

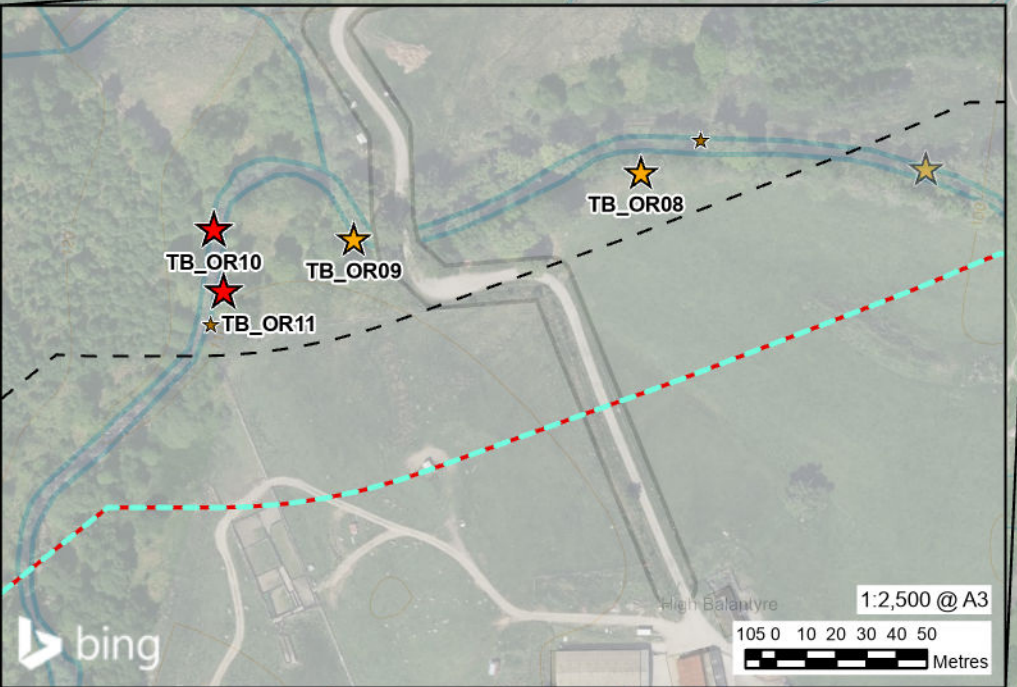
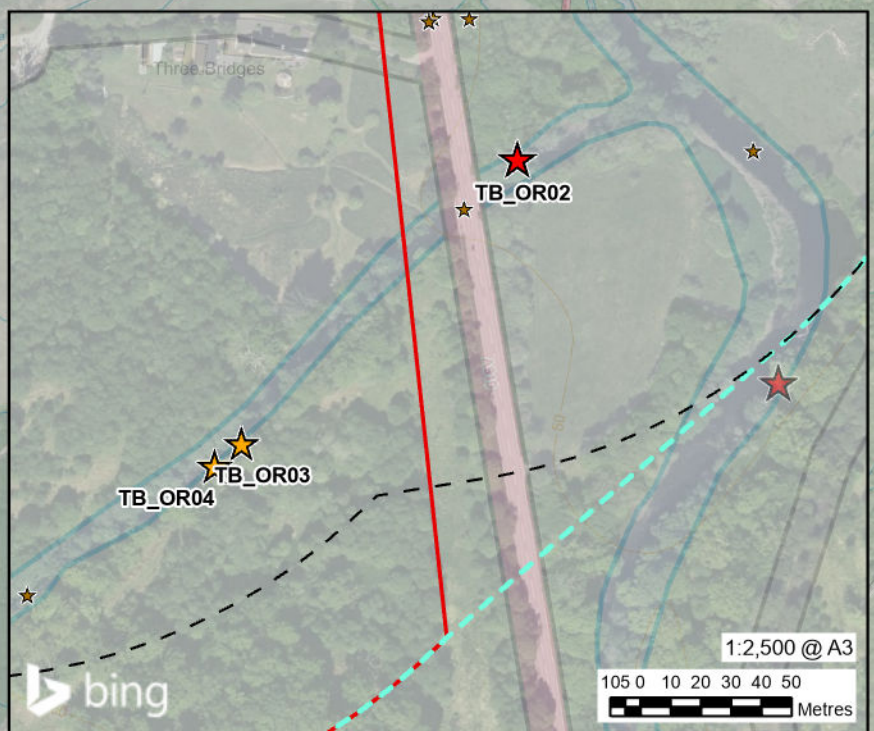
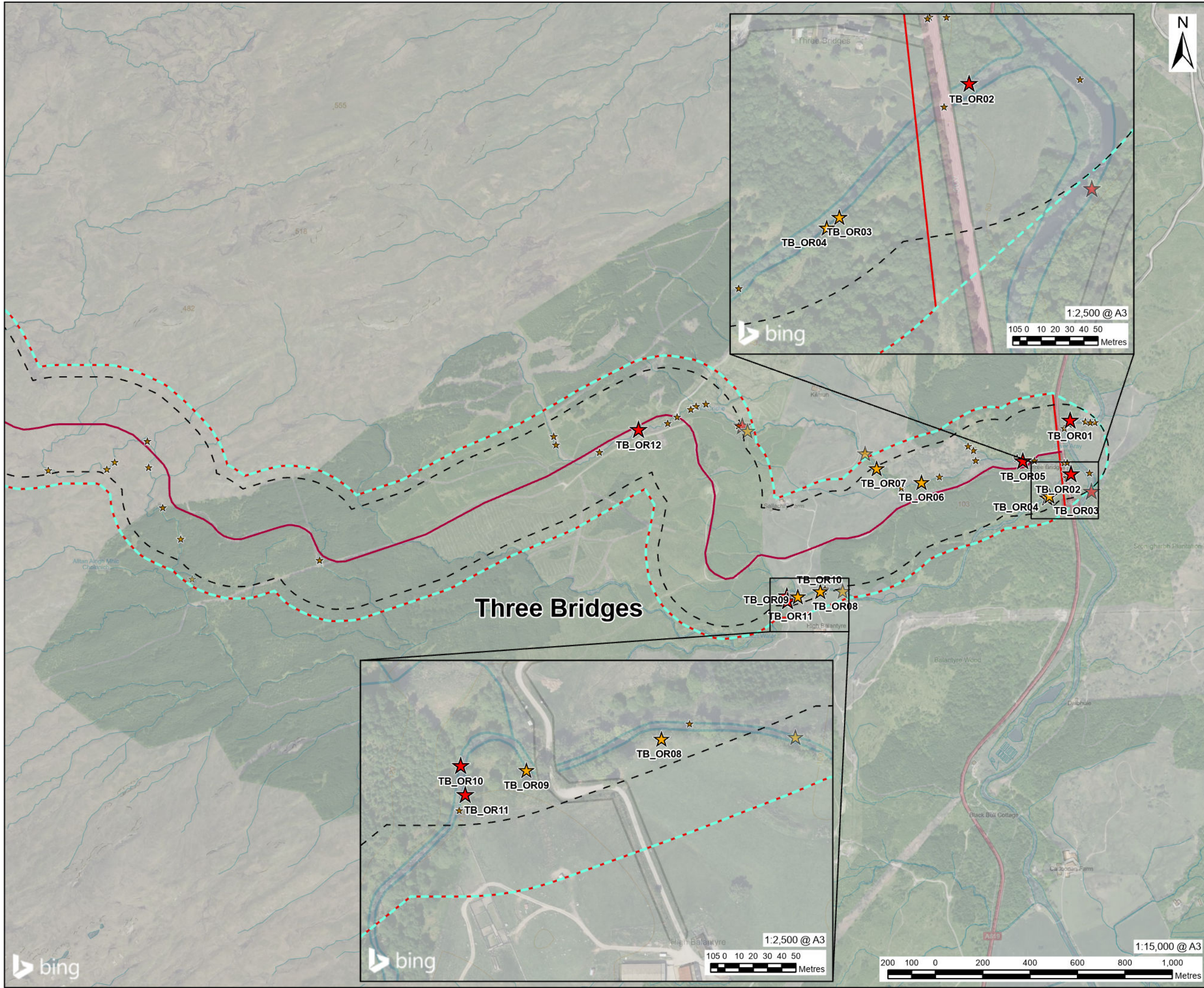
Otter Survey Results and Incidental Records

FIGURE NUMBER

Figure 6.8 (Sheet 4 of 6)



This drawing has been prepared for the use of AECOM's client. It may not be used, modified, reproduced or relied upon by third parties, except as agreed by AECOM or as required by law. AECOM accepts no responsibility, and denies any liability whatsoever, to any party that uses or relies on this drawing without AECOM's express written consent. Do not scale this document. All measurements must be obtained from the stated dimensions.

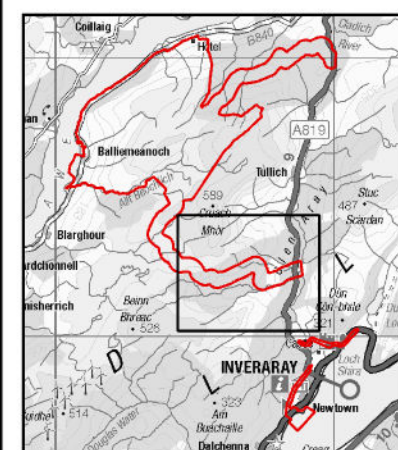


PROJECT
BALLIEMEANOCH
PUMPED STORAGE
HYDRO

CLIENT
 ILI (Borders PSH) Ltd.

CONSULTANT
 AECOM Limited
 177 Bothwell Street
 Glasgow G2 7ER
 www.aecom.com

- LEGEND**
- Development Site
 - Development Boundary
 - Above Ground Infrastructure
 - Below Ground Infrastructure
 - 200m Buffer on Above Ground Infrastructure
 - Infrastructure
 - Survey Area
 - Otter Survey Results
 - Holt
 - Lay-up
 - Spraint
 - Anal Jelly
 - Feeding Remains



NOTES

Note that otter evidence identified outside the 200 m buffer on above ground infrastructure (outside the zone of possible impacts on holts / lay-ups) are shown unlabeled and faded

Reproduced from Ordnance Survey digital map data © Crown copyright 2024. All rights reserved. Licence number 0100031673.

© 2024 Microsoft Corporation © 2024 Maxar ©CNES (2024) Distribution Airbus DS

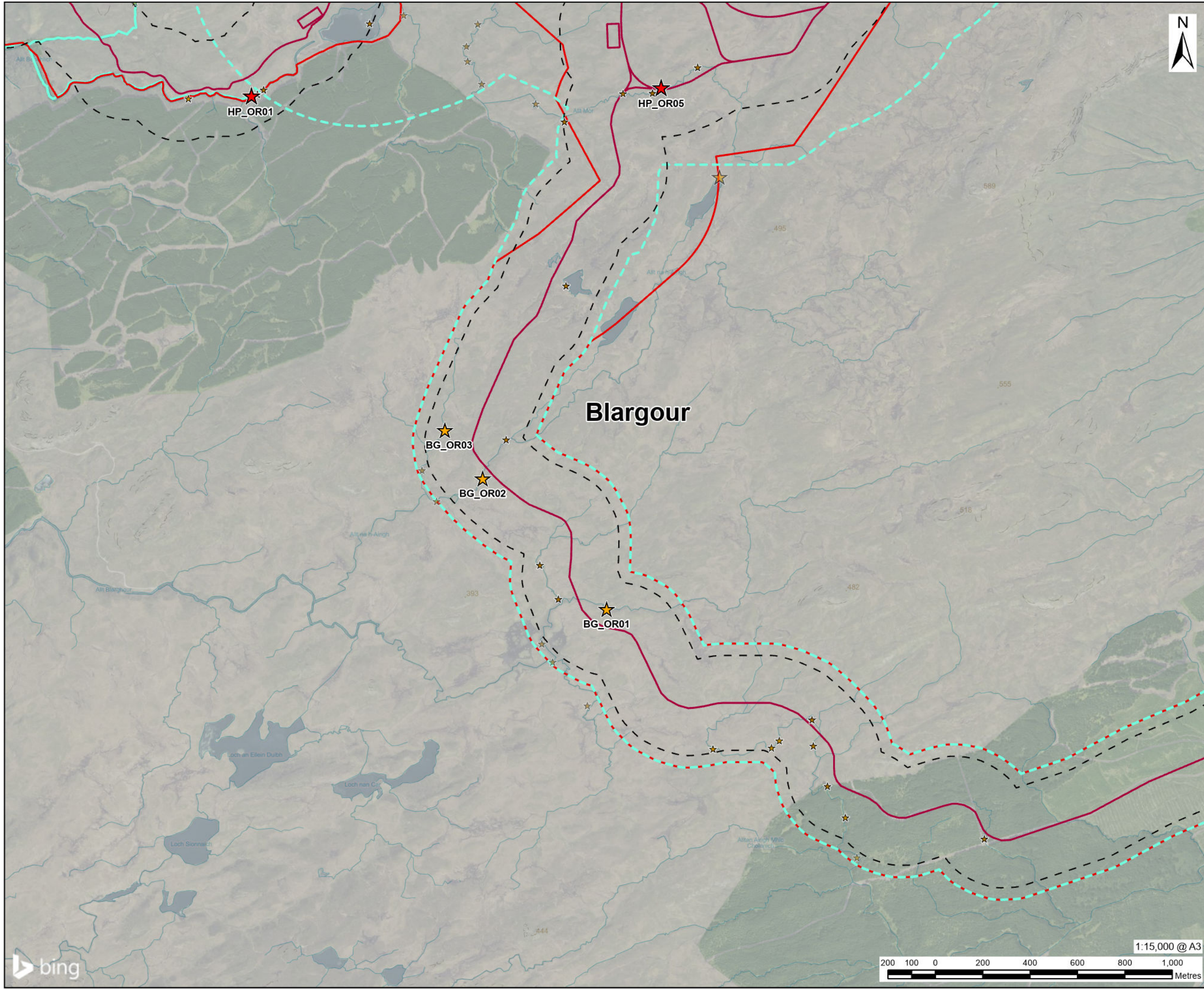
ISSUE PURPOSE
 FINAL

PROJECT NUMBER
 60570241

FIGURE TITLE
 Otter Survey Results and Incidental Records

FIGURE NUMBER
 Figure 6.8 (Sheet 5 of 6)

This drawing has been prepared for the use of AECOM's client. It may not be used, modified, reproduced or relied upon by third parties, except as agreed by AECOM or as required by law. AECOM accepts no responsibility, and denies any liability whatsoever, to any party that uses or relies on this drawing without AECOM's express written consent. Do not scale this document. All measurements must be obtained from the stated dimensions.



AECOM

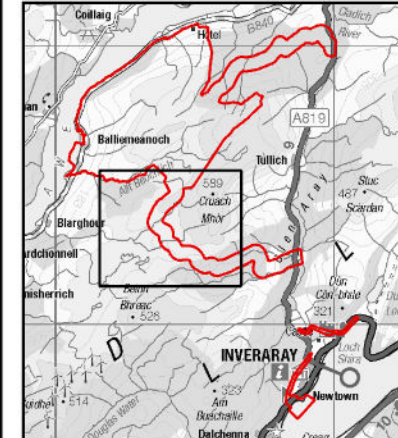
PROJECT
BALLIEMEANOCH
PUMPED STORAGE
HYDRO

CLIENT
 ILI (Borders PSH) Ltd.

CONSULTANT
 AECOM Limited
 177 Bothwell Street
 Glasgow G2 7ER
 www.aecom.com

- LEGEND**
- Development Site
 - Development Boundary
 - Above Ground Infrastructure
 - Below Ground Infrastructure
 - 200m Buffer on Above Ground Infrastructure
 - Survey Area
 - Surveyed in 2019 only

- Otter Survey Results**
- Holt
 - Lay-up
 - Spraint
 - Anal Jelly
 - Feeding Remains



NOTES

Note that otter evidence identified outside the 200 m buffer on above ground infrastructure (outside the zone of possible impacts on holt / lay-ups) are shown unlabeled and faded

Reproduced from Ordnance Survey digital map data © Crown copyright 2024. All rights reserved. Licence number 0100031673.

© 2024 Microsoft Corporation © 2024 Maxar ©CNES (2024) Distribution Airbus DS

ISSUE PURPOSE
 FINAL

PROJECT NUMBER
 60570241

FIGURE TITLE
 Otter Survey Results and Incidental Records

FIGURE NUMBER
 Figure 6.8 (Sheet 6 of 6)



This drawing has been prepared for the use of AECOM's client. It may not be used, modified, reproduced or relied upon by third parties, except as agreed by AECOM or as required by law. AECOM accepts no responsibility, and denies any liability whatsoever, to any party that uses or relies on this drawing without AECOM's express written consent. Do not scale this document. All measurements must be obtained from the stated dimensions.